

Pandemic Face Mask

Recommendations for Donations
to United Church Homes



Thanks for your help!

- Our greatest need is for the style of mask pictured
- We expect to launder them along the way, so **PLEASE launder the fabric prior to making them.**
- Please make the masks with **2 different cotton fabrics**: one for facing outward and one inward against the face.
- We suggest **2 layers of non-woven interfacing layer** to help serve as a filter.
 - “Sew-in” interfacing is best
 - OR one layer of landscaping “fabric”



Online Videos and Resources

You can spend a lot of time on the internet looking at recommendations from all over the country. There are similarities and differences depending on the source. The following resources have helped to shape our recommendations for United Church Homes. Please know that there are many variations and recommendations from different healthcare organizations. Changes and variations are being suggested almost daily based on the availability of the materials that are needed.

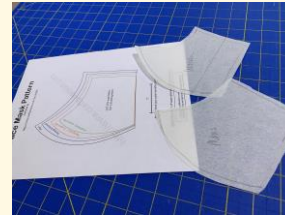
- **The Fabric Patch:** fabricpatch.net/
 - They've posted three informational videos on this site including extensive explanation of interfacing to use and other helpful suggestions.
- **Pins and Needles** in Middleburg Heights, Ohio:
[youtube.com/watch?v=irXTpoak8RA](https://www.youtube.com/watch?v=irXTpoak8RA)
 - This one is helpful for individuals who do not have much sewing experience.
 - **Please note that we add inner layers that are different from the recommendation from this site.**

Needed Supplies

- 2 different cotton fabrics
 - One outward facing
 - One inward facing for the lining against the face
- Non-woven sew in interfacing* or landscaping fabric
- Elastic or binding*
- Wire (18 gauge)*
(**pipe cleaners** can be a good substitute)



1. Pre-wash the fabric
2. Download pattern and cut out with ¼-inch seam allowance:
craftpassion.com/?p=26304
3. Cut out the printed pattern adding the seam allowance



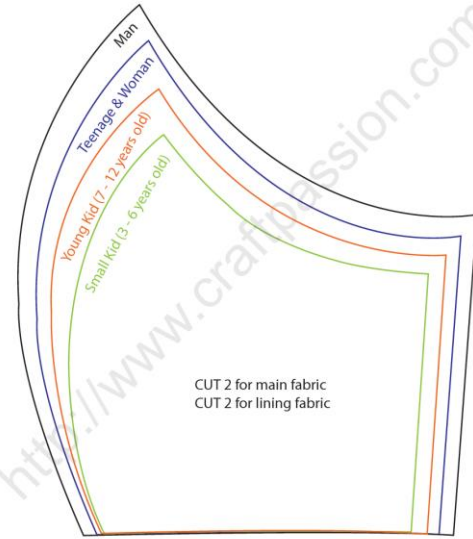
*Please refer to fabricpatch.net for specific recommendations for each of these items or to substitute them with other things that can be secured at this time

Copyright © craftpassion.com
Meant for hobby and personal use only. Do not sell.

The preferred face mask pattern can be printed from:

[craftpassion.com/face-mask-sewing-pattern/](http://www.craftpassion.com/face-mask-sewing-pattern/)

This includes multiple sizes. The men and the teenage/women sizes are the ones that will be most useful.



2"
Please check your scale here after print

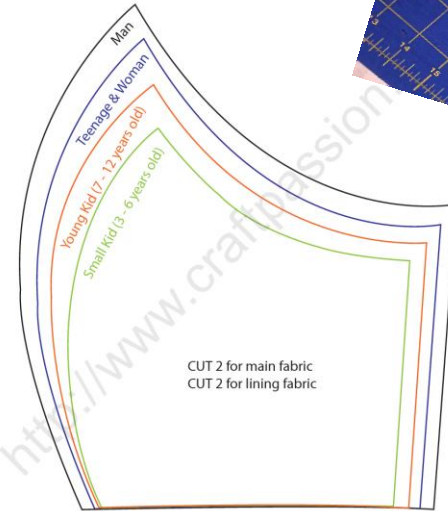
Note: Please add 1/4" seam allowance for all the pattern

This image is not to scale. Please download from the indicated website.

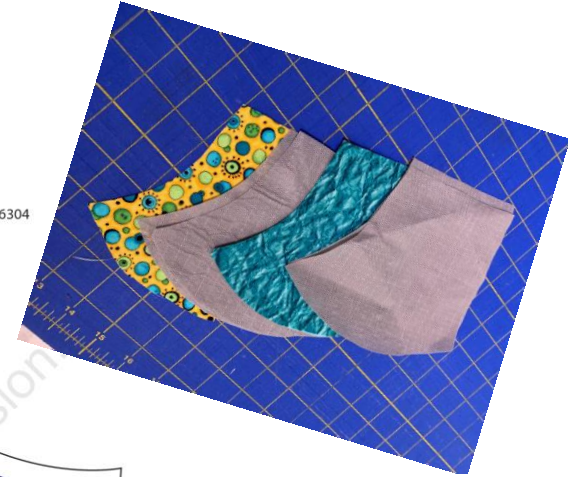
Cutting the pieces

- Cut 2 pieces of the outward facing fabric.
- Cut 2 pieces of the inward facing fabric.
- Cut four pieces from the interfacing or landscaping fabric (added to both the outward facing and inward facing pieces)

<http://www.craftpassion.com/?p=26304>



2"
Please check your scale here after print

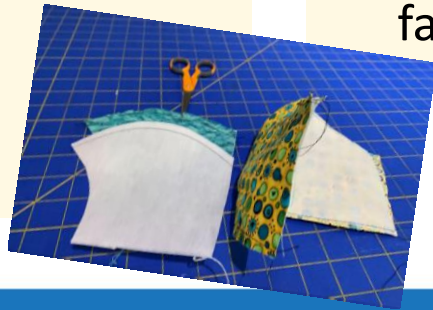


This image is not to scale. Please download from the indicated website.

Assembling the outward and inward pieces

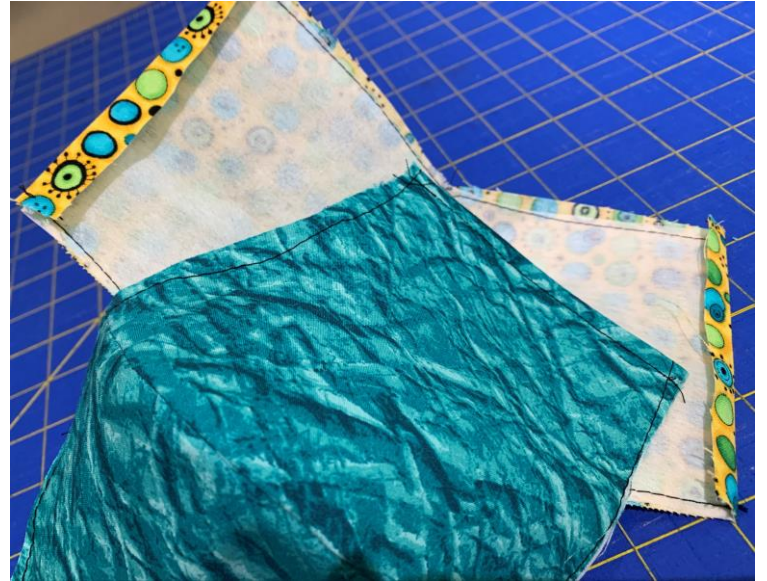
4. Sew two outward pieces together along curved edge with right sides together
5. Do the same with 2 of the interfacing pieces
6. Clip along the curved edge about every 1" being sure not to cut into the seams

7. Pin these two cupped pieces together, wrong sides together, at the center seam
8. Baste 1/8" across the top and bottom edges
9. Repeat with the fabric and filter layer for the inward facing pieces



Finish the side edges

10. Fold both ends to the interfacing side of both the forward facing layers and the inward facing layers $\frac{1}{4}$ " to $\frac{1}{2}$ "
11. Stitch these down $\frac{1}{4}$ " from folded edge



Securing the Elastic or Ties

- Cut 2 pieces of elastic 7" each
- OR make 4 "binding" pieces for the mask to be able to tie in place 16 ½ to 18 ½ inches each
 - Please refer to the information on fabricpatch.net for alternatives if you can't find elastic
 - If you need to use **elastic hair ties**, extend the edge of the pattern for all layers another ¾" to 1" on both sides as the hair ties are shorter than the suggested 7" elastic length

12. Sew either the elastic or hair ties or binding pieces on the wrong side of the outward facing layer



Sew the front and back pieces together



13. Sew the outward facing and inward facing sides together (right sides together) along the top and the bottom edges with a $\frac{1}{4}$ " seam allowance
 - **Leave the side seams open** (this will create a pocket in case an additional filter layer would be inserted and used)

Sew the wire in place

- Cut 4" of wire (or pipe cleaner)
- Round the ends with pliers or flatten with a hammer



14. Sew the wire in the seam allowance using a zig-zag stitch across the upper curved edge

Finishing the mask

- Turn the mask right-side out
- Finger press the seams



15. Top stitch $\frac{1}{4}$ " along the top and bottom edges on the outside of the mask smoothing the seams in place
 - Be careful of the wire now stitched in the upper seam allowance – you may need to go to $\frac{3}{8}$ " around the wire.

Sending your masks

- If you have used ties, please loosely knot these together
- Place your masks in a plastic bag and include a note to let us know
 - how many masks are in the bag
 - what you used for the filtering layers
- You can either deliver your donations to one of [our communities](#)
 - Or send them via mail or other delivery service





THANK YOU for your
time and talents and
helping us keep our staff
and residents safe!