

FRAMING THE YEAR: VISION, GOALS, AND PRIORITIES

Montgomery County Board of Education
July 15, 2021



MONTGOMERY COUNTY PUBLIC SCHOOLS

STUDENTS FIRST!

WHERE WE ARE: ONGOING WORK

ALL IN: EQUITY AND ACHIEVEMENT FRAMEWORK



Evidence of Learning

www.montgomeryschoolsmd.org/evidence-of-learning-framework/

The Evidence of Learning (EOL) consists of multiple measures in classroom, district, and external categories that assess student learning allowing the district to monitor students progress at each level- primary, intermediate, middle, and high school with the goal of being college and career ready.

Are our students learning? Are they learning enough?



Equity Accountability Model

www.montgomeryschoolsmd.org/evidence-of-learning-framework/equity-accountability-model.aspx

The Equity Accountability Model (EAM) uses the Evidence of Learning (EOL) data to determine the impact schools have on the students who have typically not performed as well as their White and Asian peers. The EOL data results are organized by 5 focus groups- African American/Black FARMS, African American/Black non-FARMS, Hispanic/Latino FARMS, Hispanic/Latino non-FARMS and all other FARMS students. The district also measures and monitors the progress of Whites and Asians with the goal of 90% achievement among all student groups.

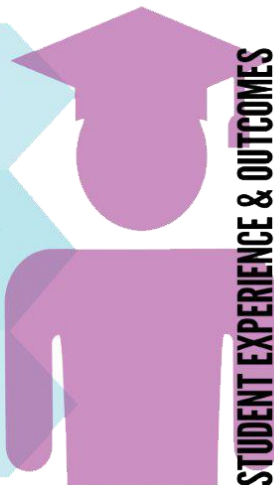
If not why not? How do we know?



Equitable Access to Resources

The Equitable Access to Resources (EAR) portion of the Equity and Achievement Framework examines how well the system and schools are using staff, time and money as measured by student outcomes with emphasis on the performance of the 5 focus groups. The primary goal of a deep examination of system resource allocation and use is to reduce the likelihood that student outcomes are predictable by race or income.

What are we going to do about it?



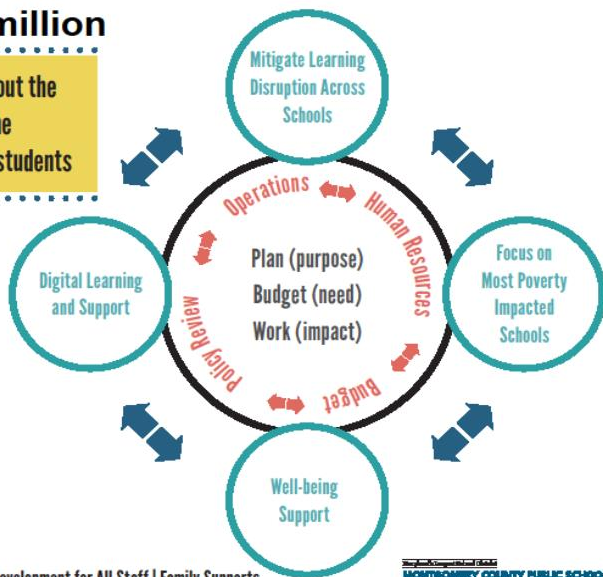
Essential Questions:

- Are our students learning?
- Are they learning enough?
- How do we know?

WHERE WE ARE: ONGOING WORK

THE PLAN: \$30 million

Moving from thinking about the number of students to the level of need among our students



Essential Questions:

- If not, why not?
- What are we going to do about it?

— January 2021 - September 2023 —

Excellence in Equity | Professional Development for All Staff | Family Supports

MONTGOMERY COUNTY PUBLIC SCHOOLS
Improving Opportunity and Enriching Potential



MONTGOMERY COUNTY PUBLIC SCHOOLS

STUDENTS FIRST!

WHERE WE ARE GOING

PROSPER **100**



STUDENTS FIRST!



Putting Students First



MONTGOMERY COUNTY PUBLIC SCHOOLS

STUDENTS FIRST!



Renewing Relationships



Open for 5 Days a Week of
In-Person Instruction



Supporting Staff to Meet Student Needs



Preparing for Our Future



MONTGOMERY COUNTY PUBLIC SCHOOLS

STUDENTS FIRST!



Educating for Equity



Reestablishing the Culture of Respect

**PROSPER
100**

**BOE
STRATEGIC
PLAN**

**ONGOING
ENGAGEMENT**



MONTGOMERY COUNTY PUBLIC SCHOOLS

STUDENTS FIRST!

PROSPER ***100***



STUDENTS FIRST!

*Excellence, then, is not
an act but a habit.*
–Aristotle

DISCUSSION